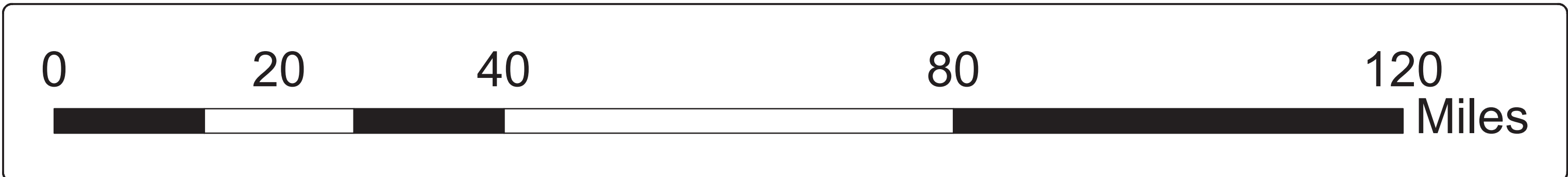


Key to Features

- ★ County Seat
- ~ Major River
- Interstate Highway
- ☞ Trinity Regional Flood Planning Basin
- Regional County

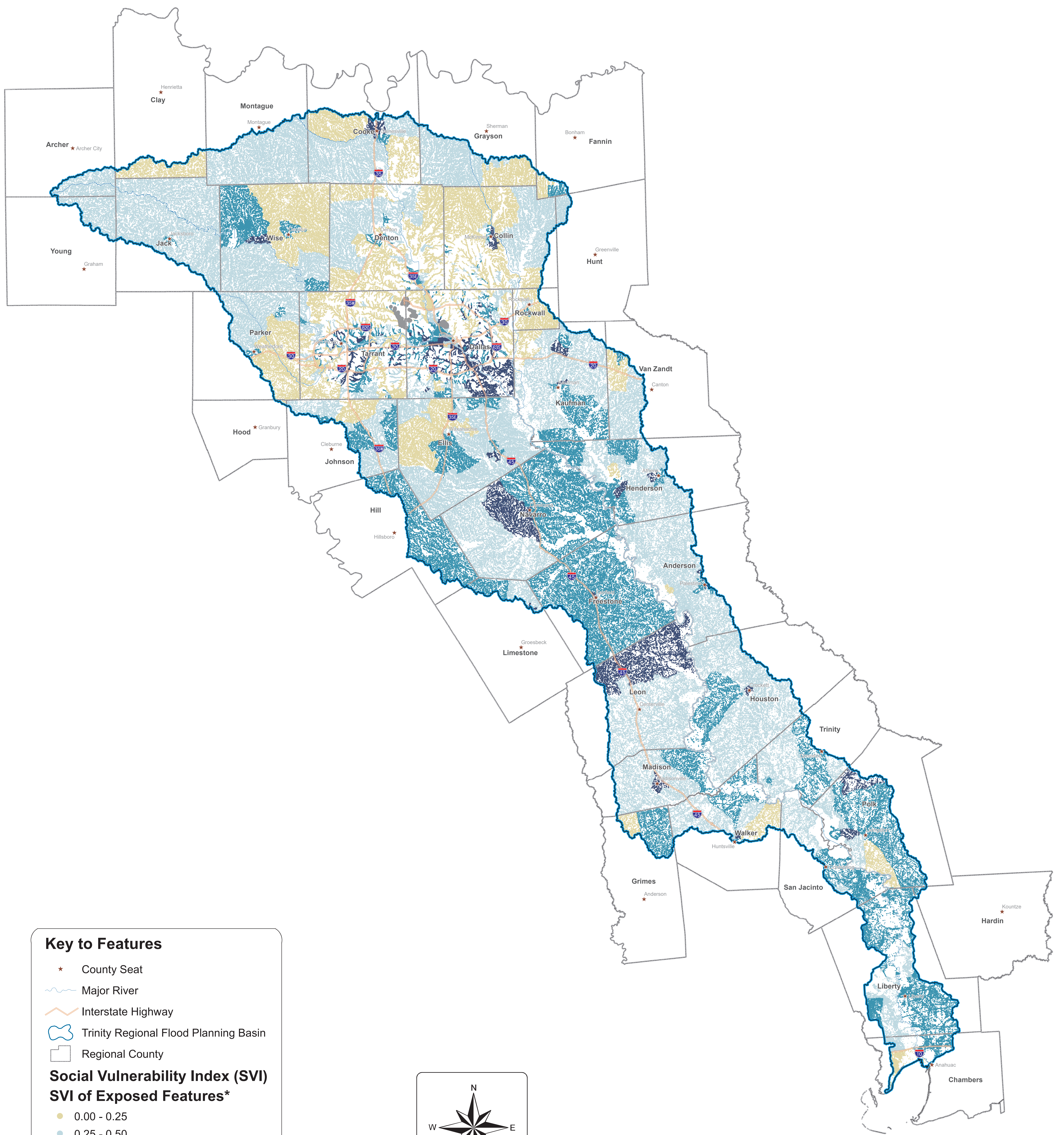
Social Vulnerability Index (Potential Future Conditions)
(Average SVI by County)

- 0.50 - 0.75
- 0.25 - 0.50
- 0.00 - 0.25



Region 3 - Trinity

Map 12
Future Flood Exposure Vulnerability
SVI Average per County



Region 3 - Trinity

**Map 12.1
Future Flood Exposure Vulnerability
SVI of Exposed Features**

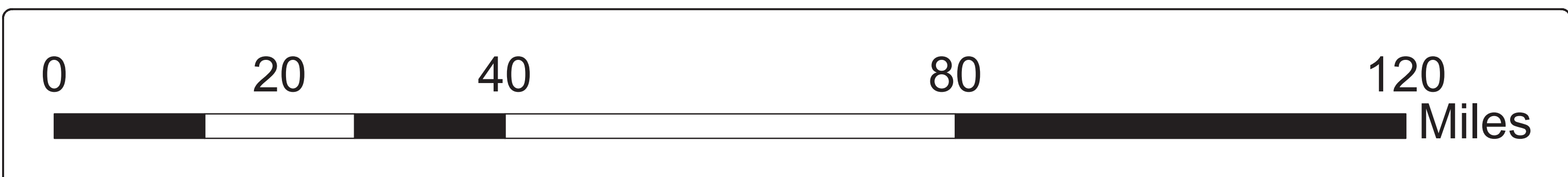
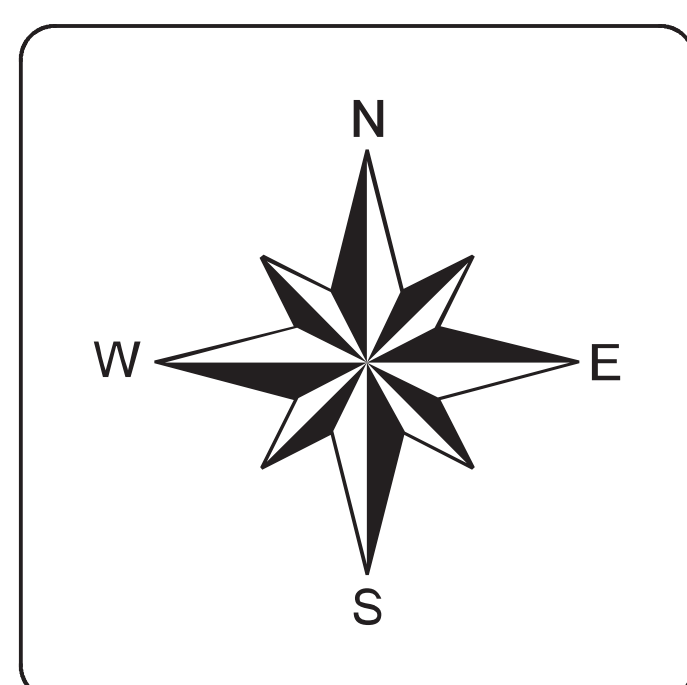
Key to Features

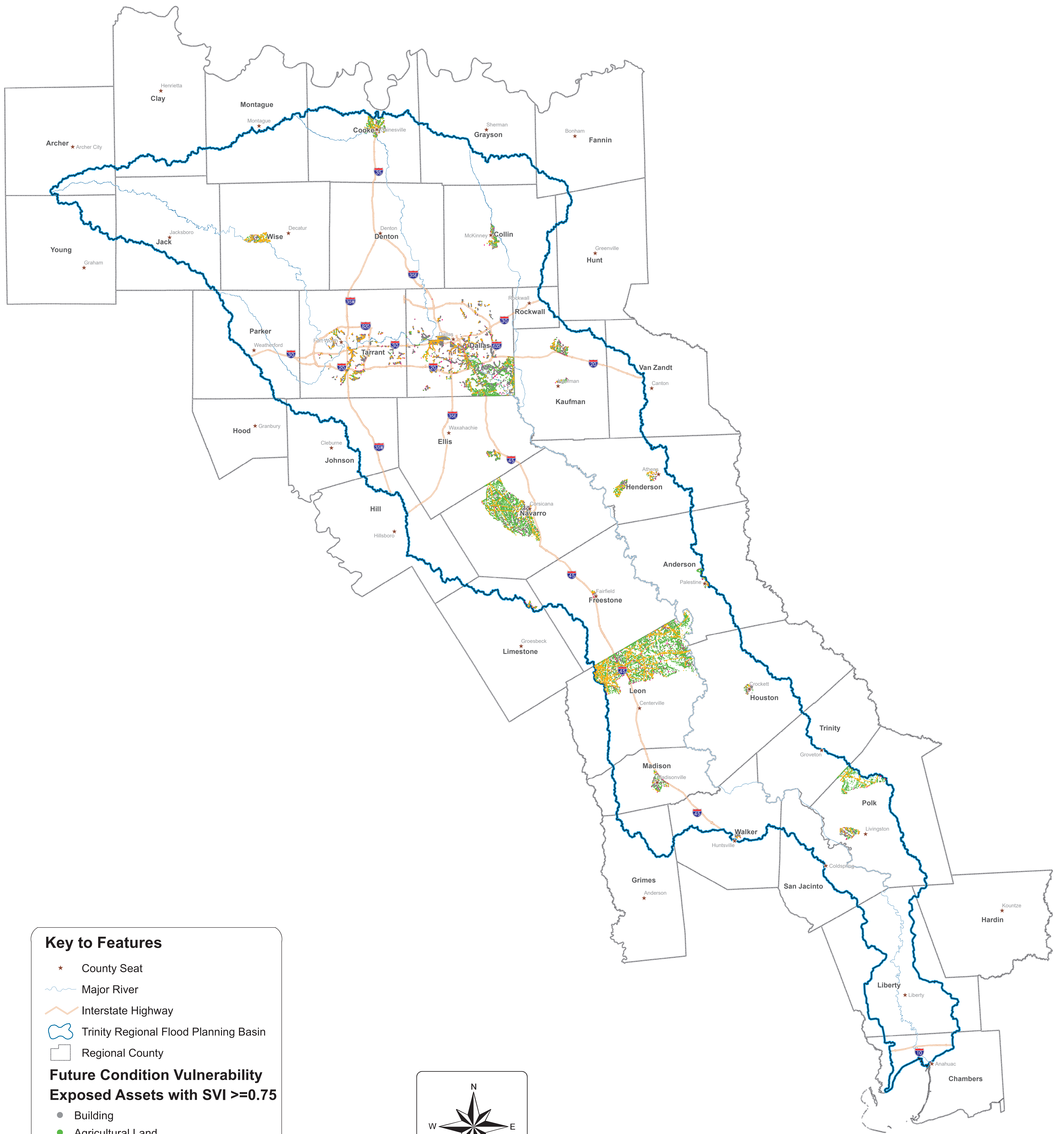
- ★ County Seat
- ~ Major River
- Interstate Highway
- Trinity Regional Flood Planning Basin
- Regional County

**Social Vulnerability Index (SVI)
SVI of Exposed Features***

- 0.00 - 0.25
- 0.25 - 0.50
- 0.50 - 0.75
- 0.75 - 1.00
- NoData

*SVI Data is by Census Tract



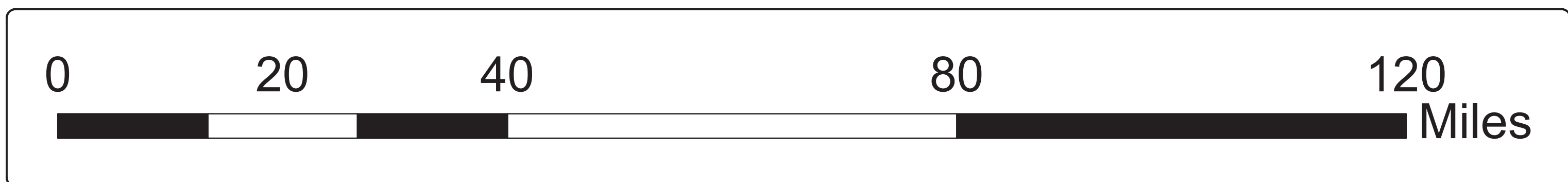
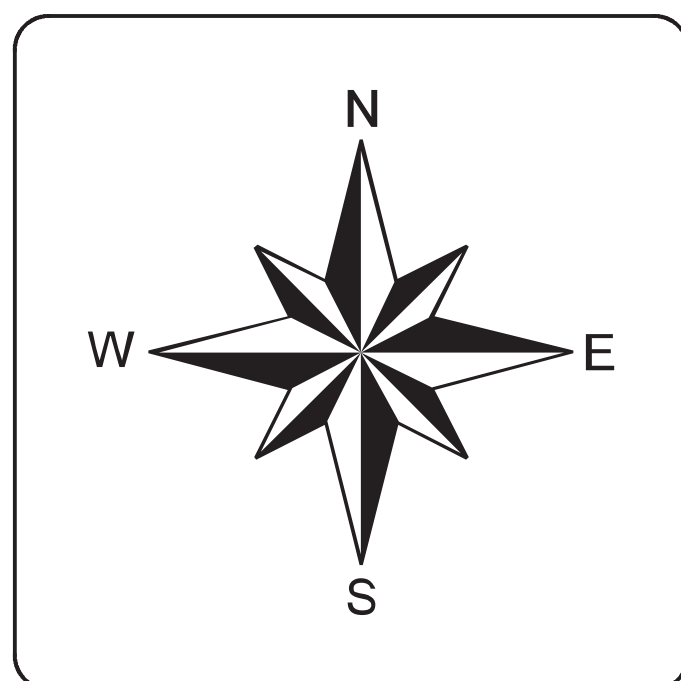


Key to Features

- ★ County Seat
- ~ Major River
- Interstate Highway
- ☞ Trinity Regional Flood Planning Basin
- Regional County

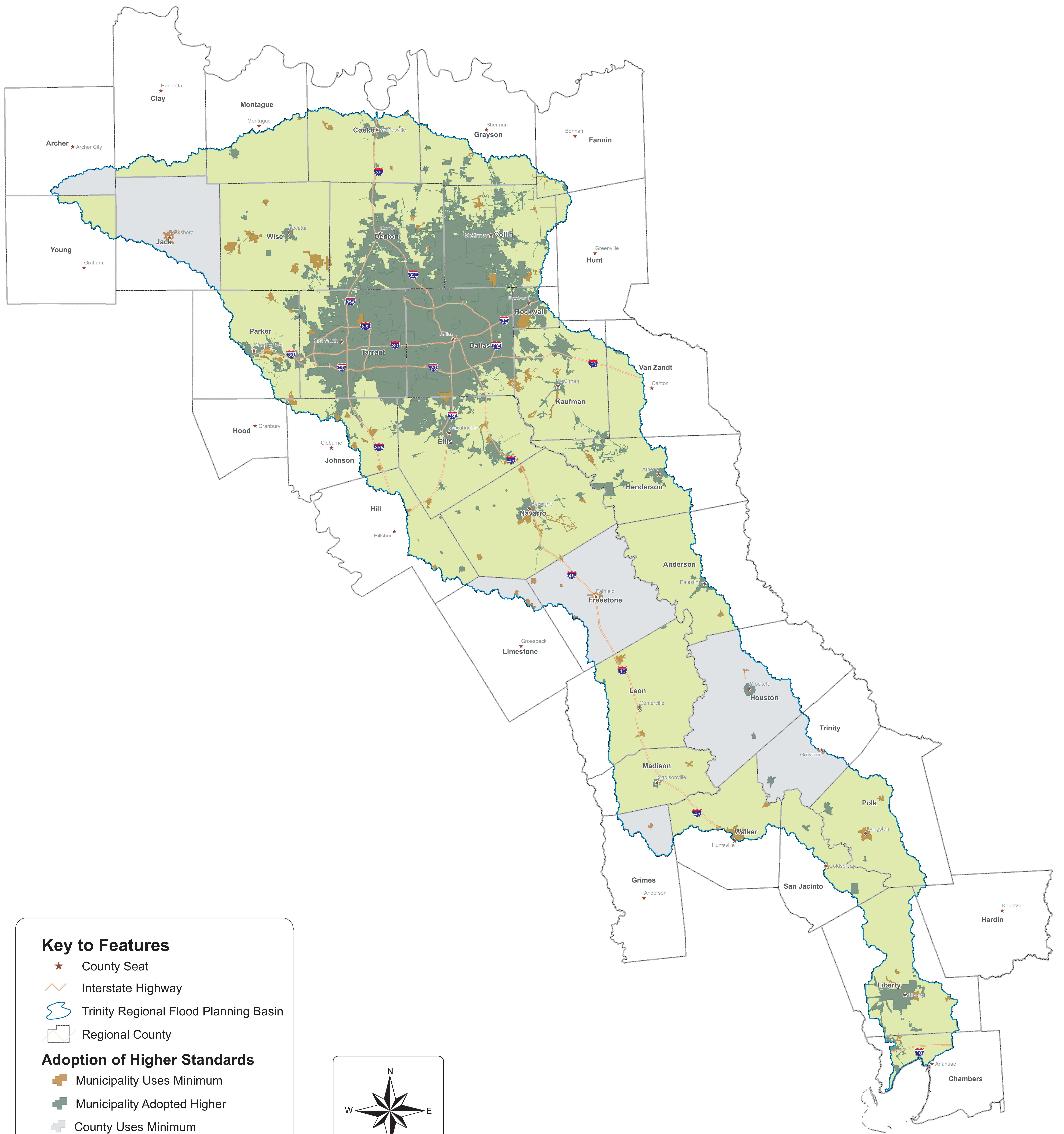
Future Condition Vulnerability Exposed Assets with SVI >=0.75

- Building
- Agricultural Land
- Power Generation
- Roadway Segment/Stream Crossing
- Other Critical Facilities



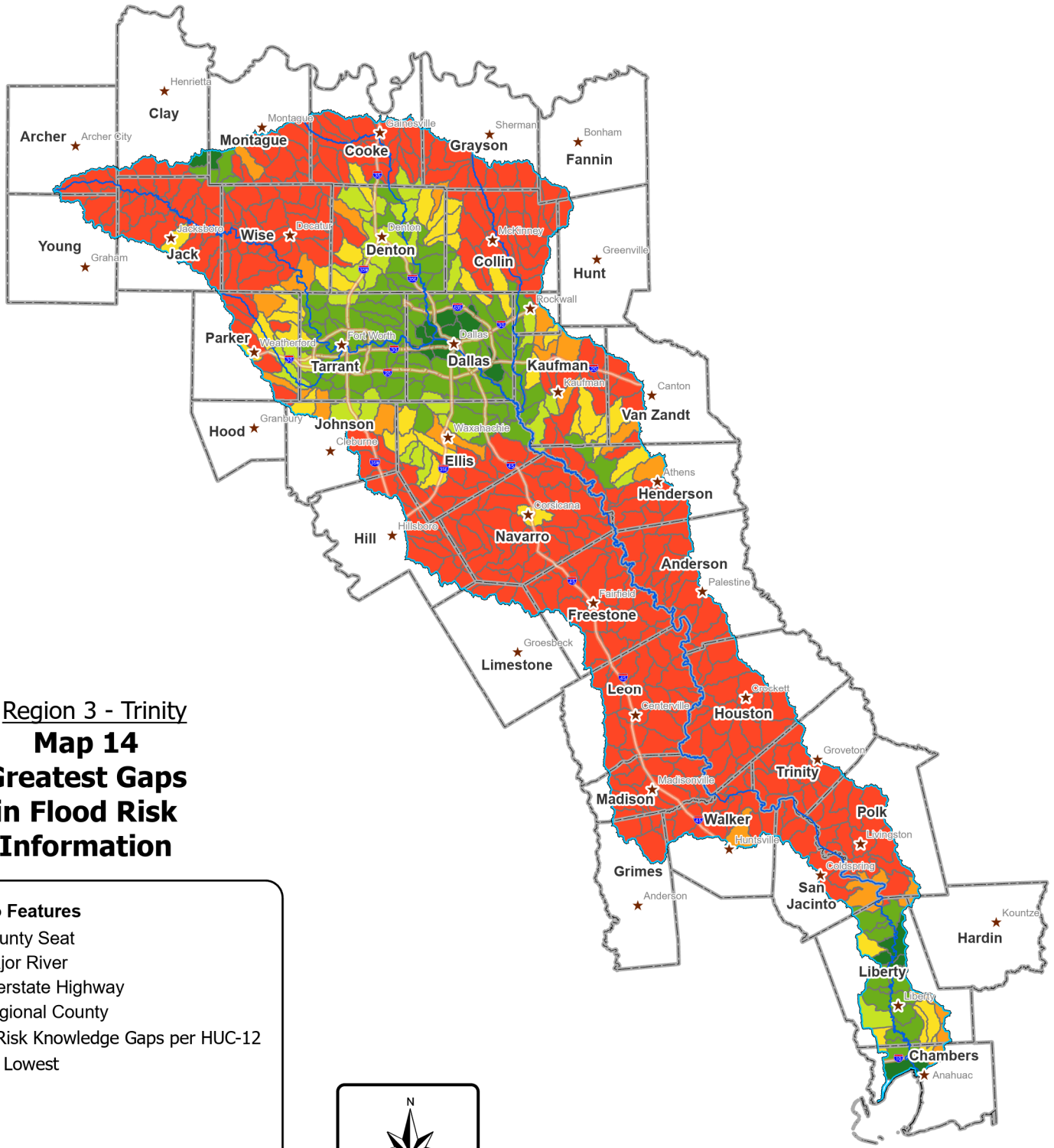
Region 3 - Trinity

**Map 12.2
Future Flood Exposure Vulnerability
High SVI Exposed Features**



Region 3 - Trinity

**Map 13
Floodplain Management
Practices**



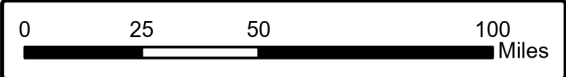
Region 3 - Trinity
Map 14
Greatest Gaps
in Flood Risk
Information

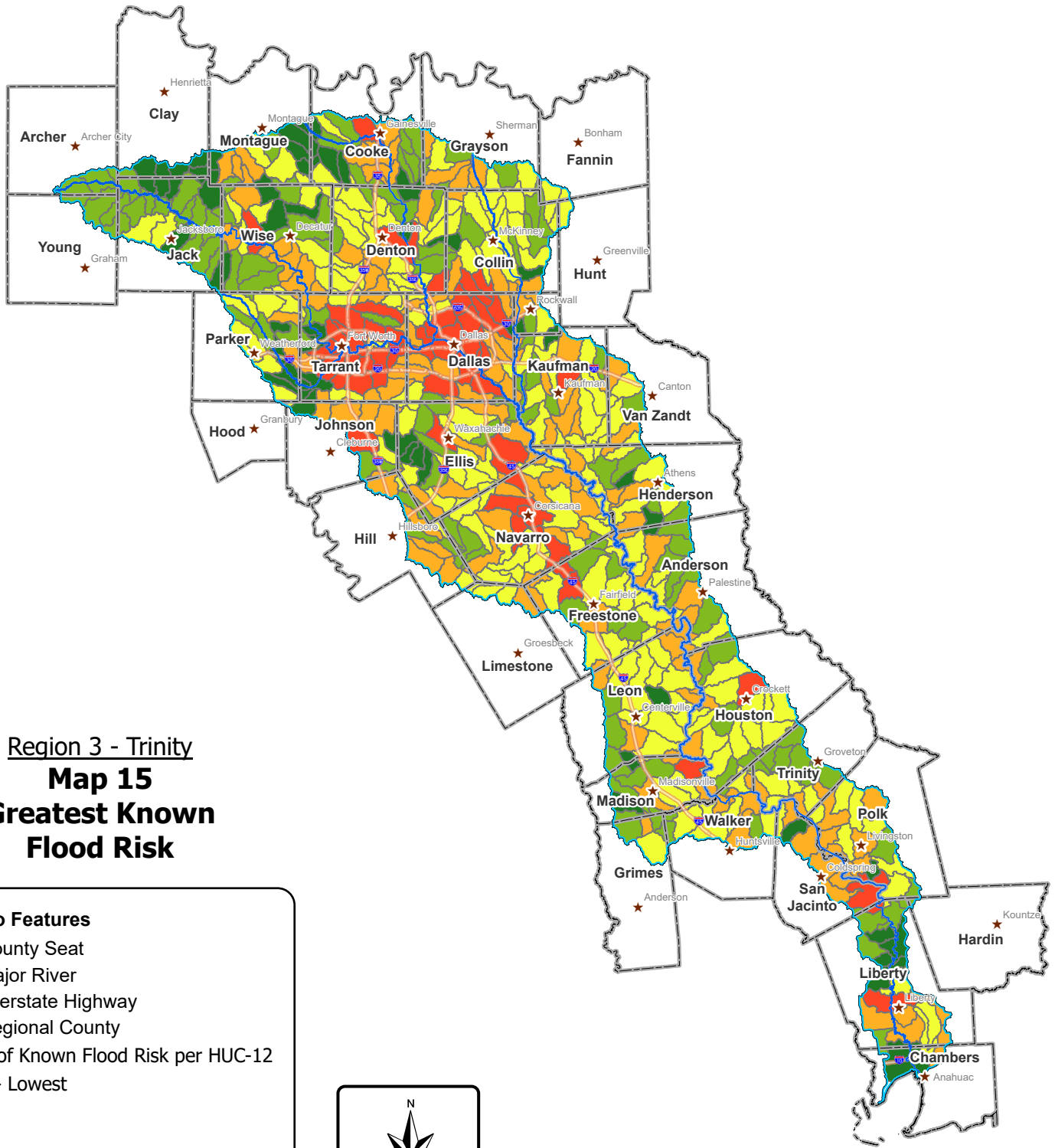
Key to Features

- ★ County Seat
- Major River
- Interstate Highway
- Regional County

Flood Risk Knowledge Gaps per HUC-12

- 0 - Lowest
- 1
- 2
- 3
- 4
- 5 - Highest





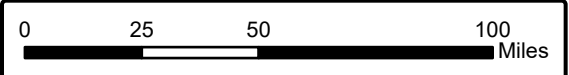
Region 3 - Trinity
Map 15
Greatest Known
Flood Risk

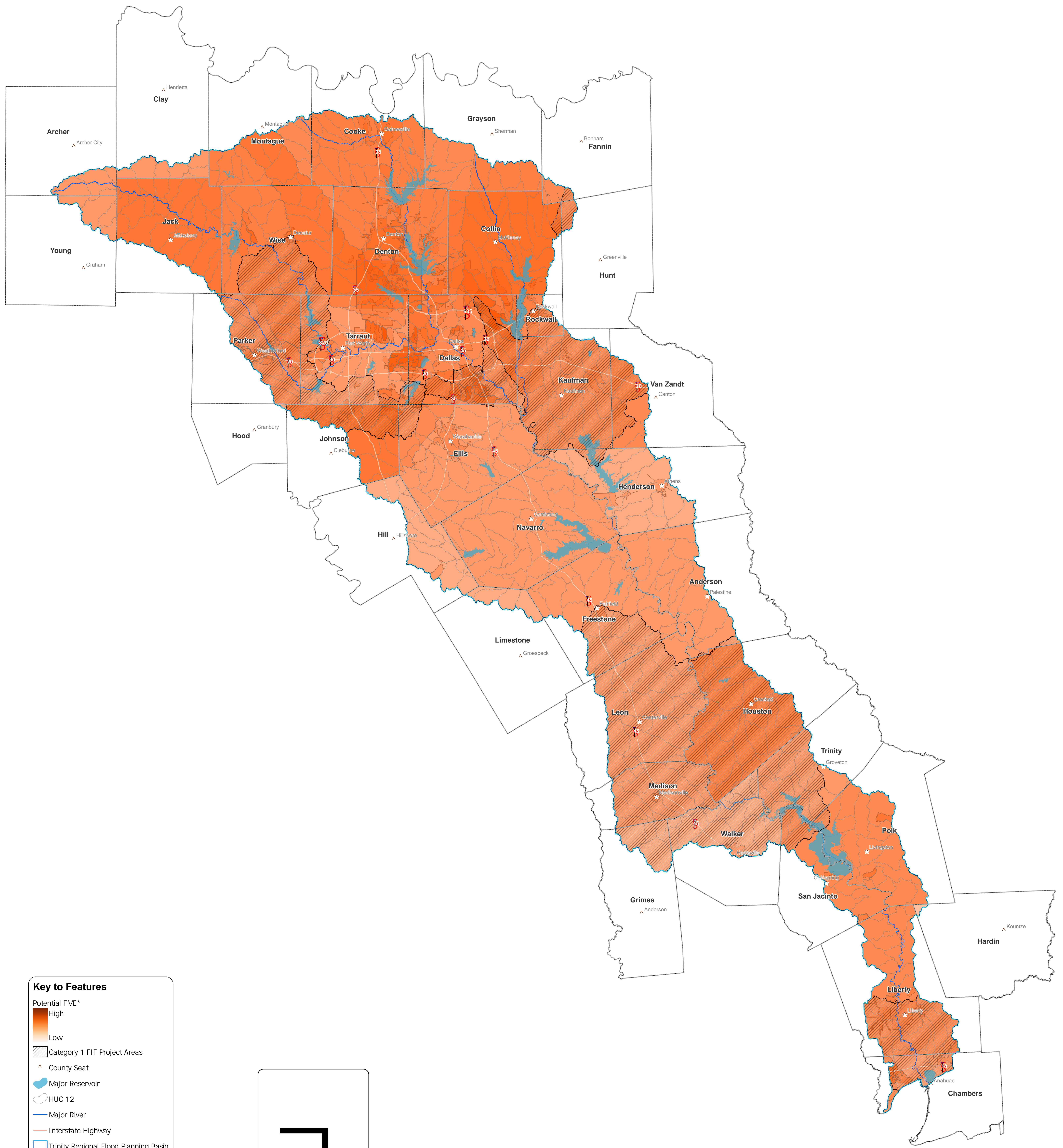
Key to Features

- ★ County Seat
- Major River
- Interstate Highway
- Regional County

Level of Known Flood Risk per HUC-12

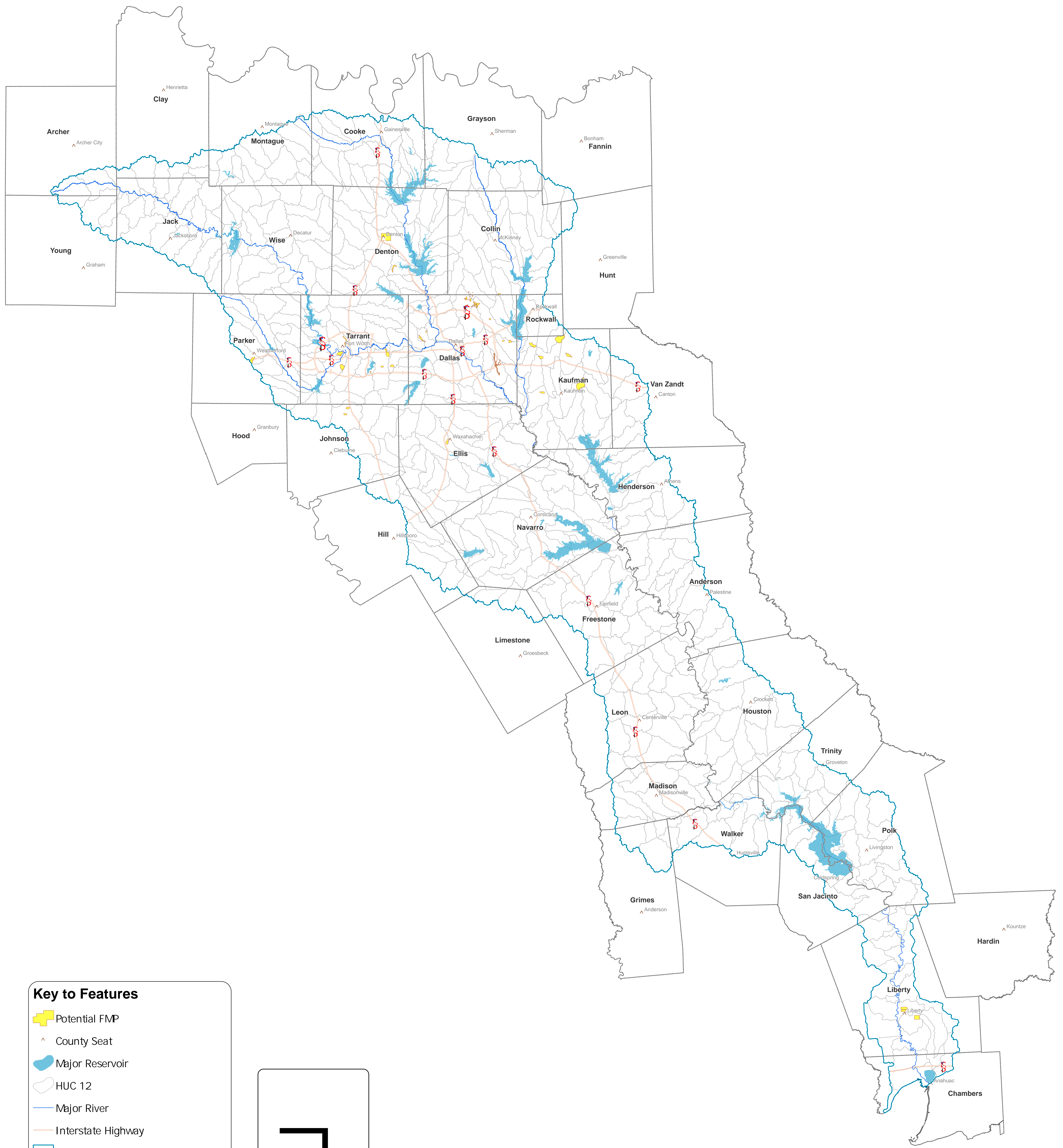
- 1 - Lowest
- 2
- 3
- 4
- 5 - Highest





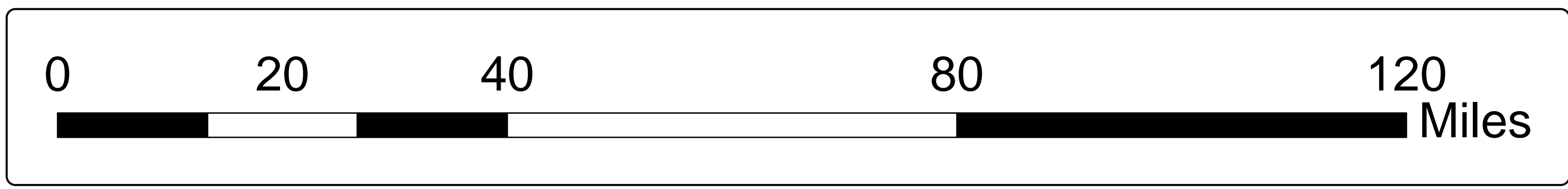
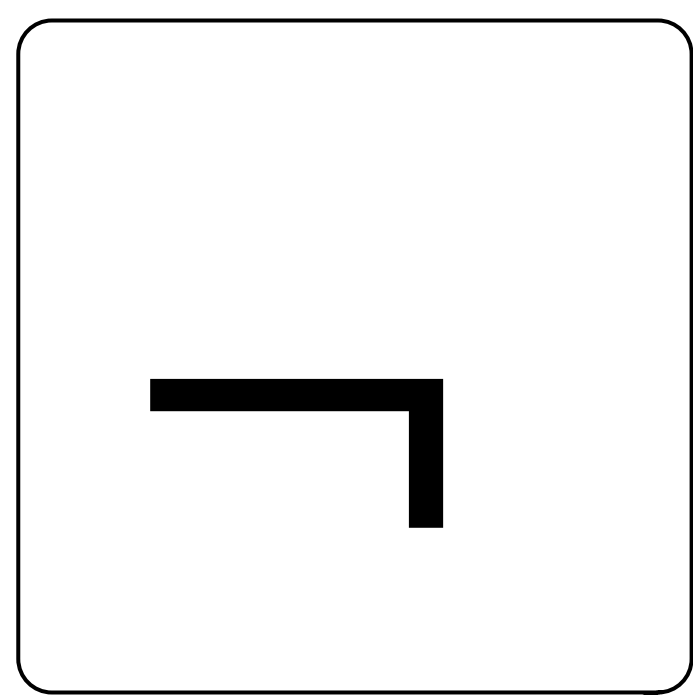
Region 3 - Trinity

**Map 16
Extents of Identified
Potential FMEs**

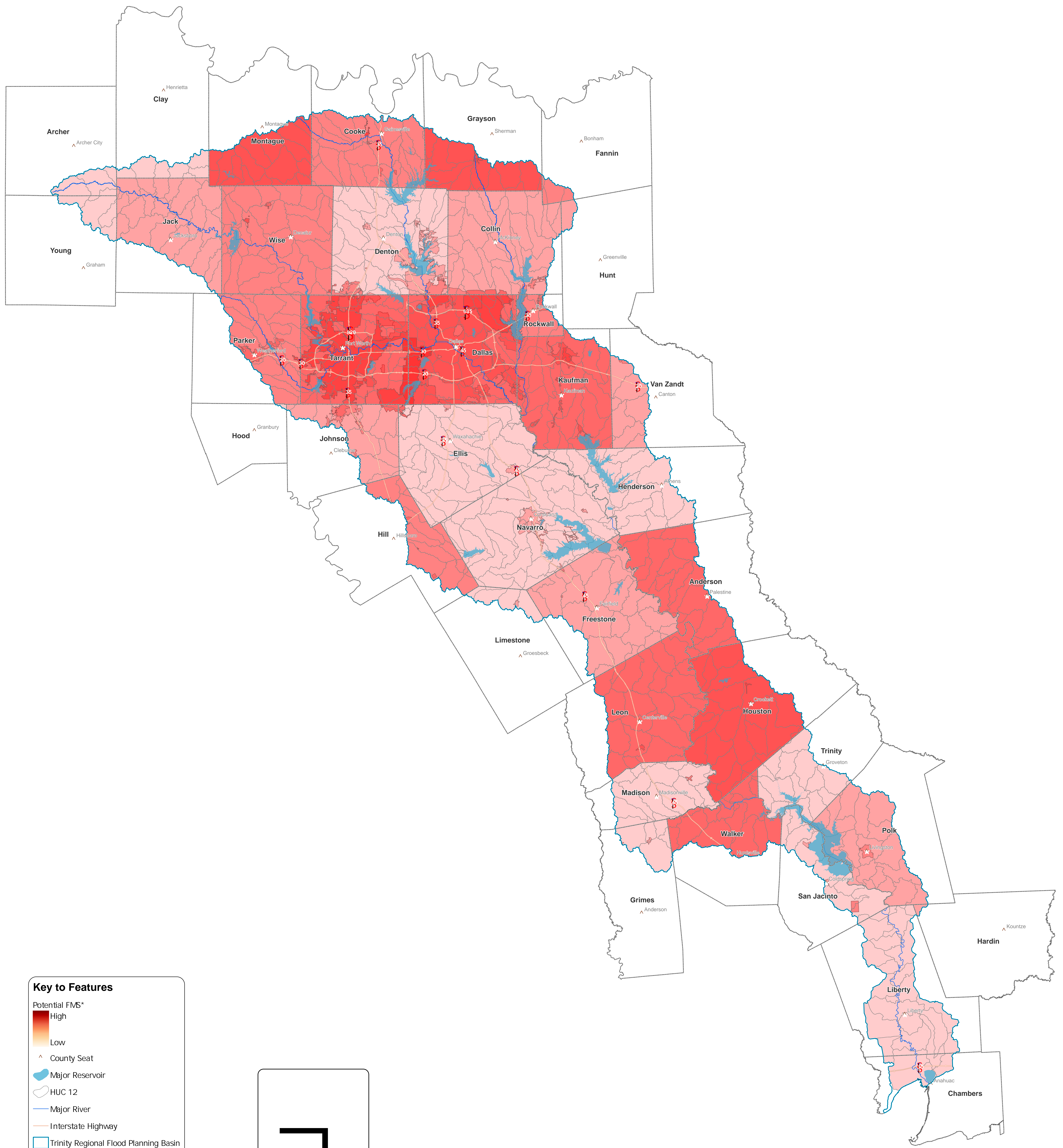


Key to Features

- Potential FMP
- ▲ County Seat
- Major Reservoir
- HUC 12
- Major River
- Interstate Highway
- Trinity Regional Flood Planning Basin
- Regional County



Region 3 - Trinity
Map 17
Extents of Identified
Potential FMPs



Key to Features

Potential FMS*

- High
- Low

County Seat

Major Reservoir

HUC 12

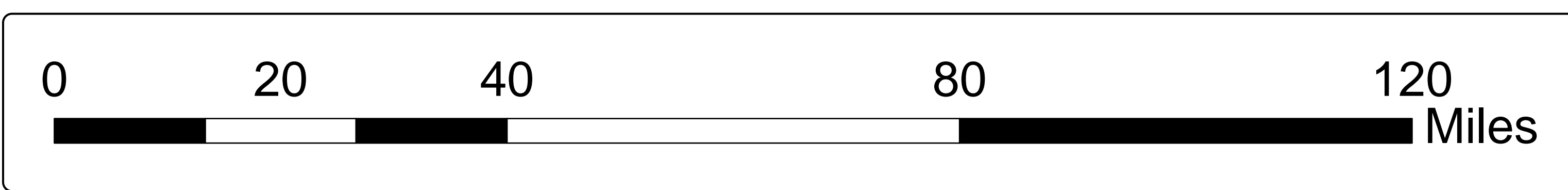
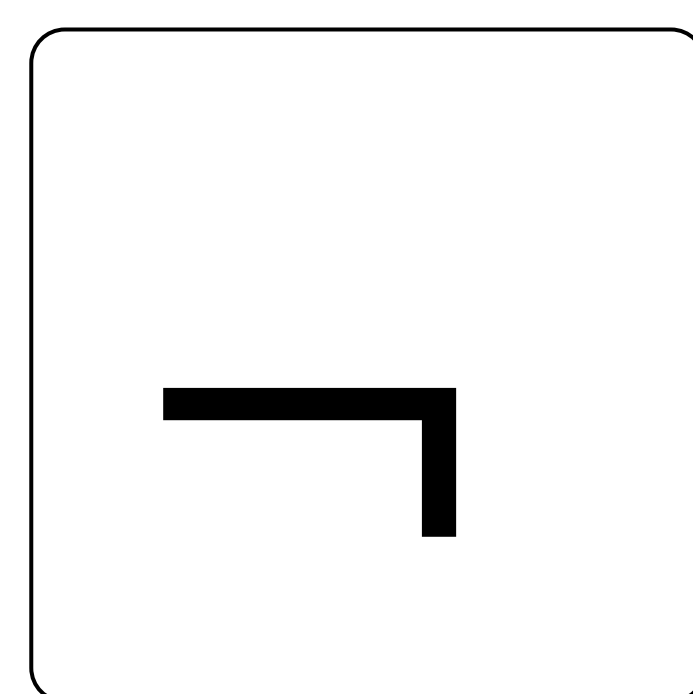
Major River

Interstate Highway

Trinity Regional Flood Planning Basin

Regional County

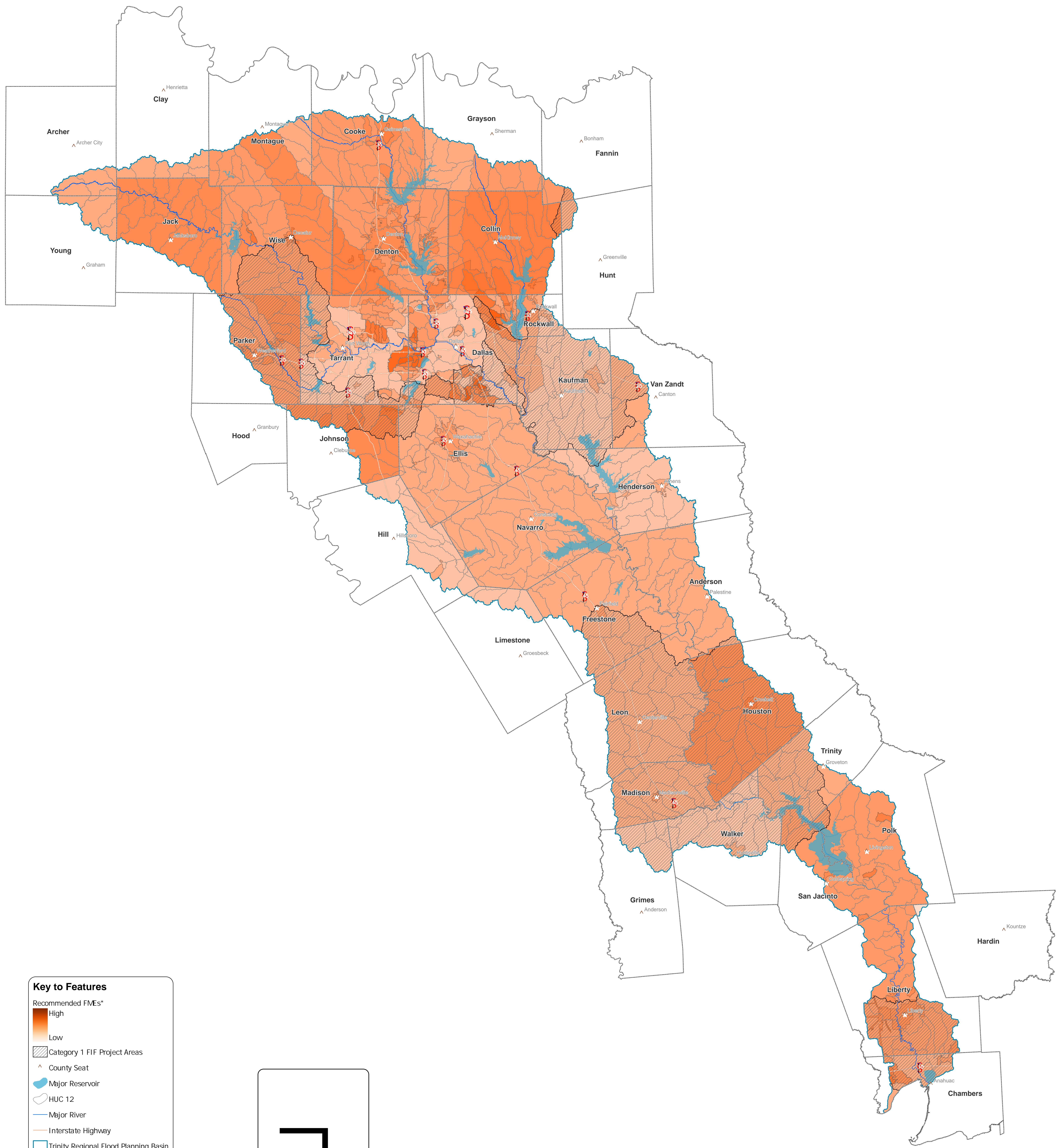
* Color symbology reflects the number of FMSs that overlap for the same area. The darker the color, the greater the number of FMSs.



Region 3 - Trinity

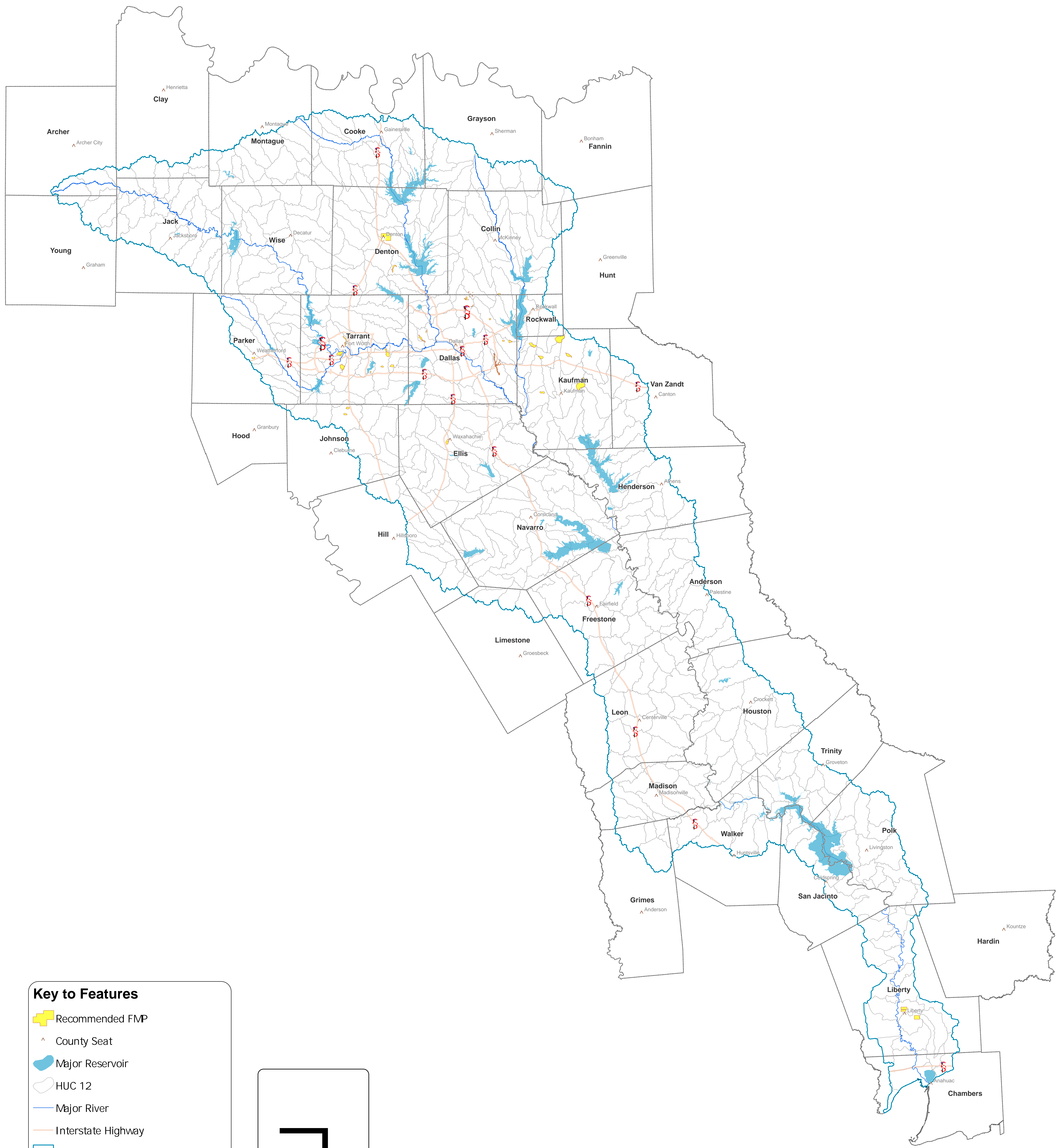
Map 18

Extents of Identified Potential FMSs



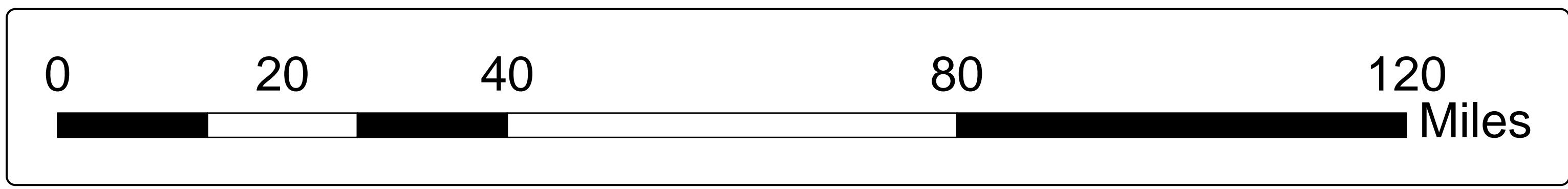
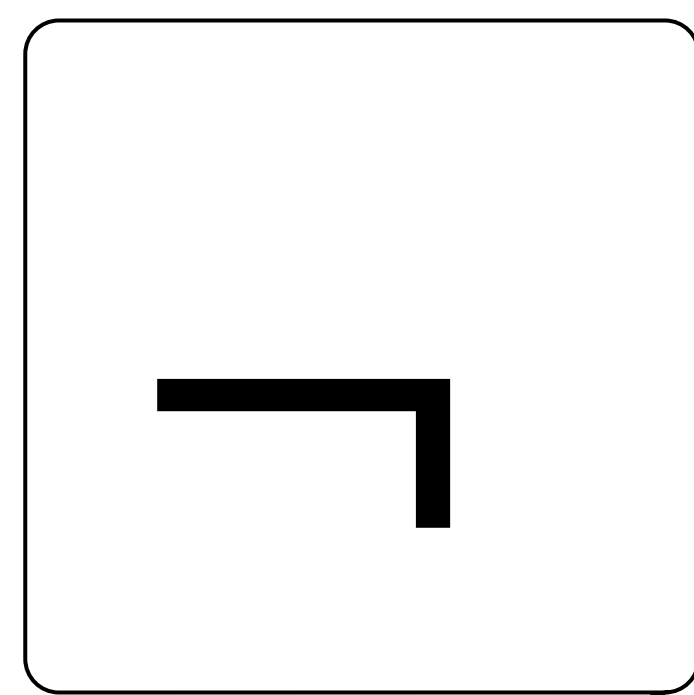
Region 3 - Trinity

**Map 19
Recommended FMEs
Impact Extents**

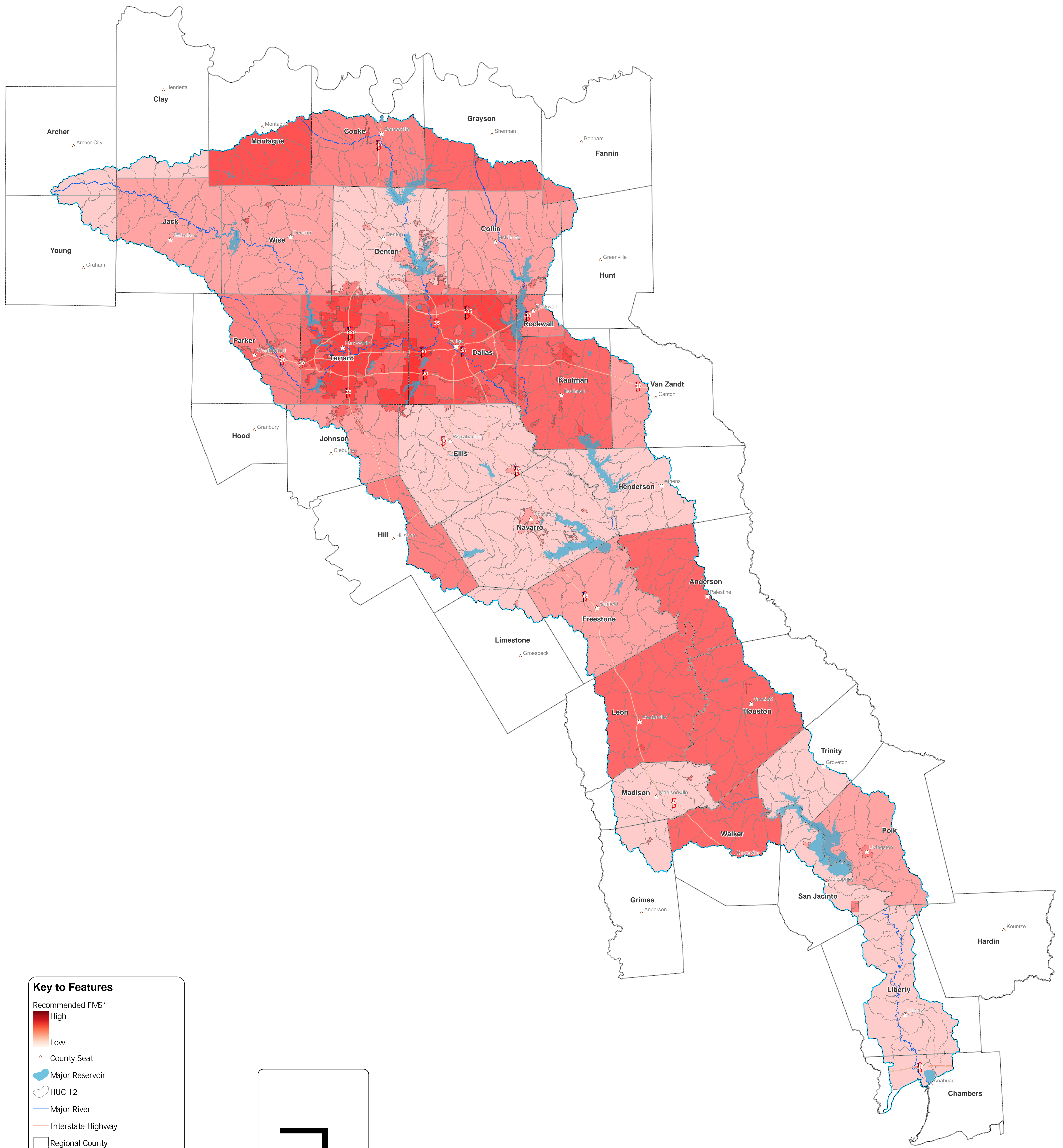


Key to Features

- Recommended FMP
- County Seat
- Major Reservoir
- HUC 12
- Major River
- Interstate Highway
- Trinity Regional Flood Planning Basin
- Regional County



Region 3 - Trinity
Map 20
Recommended FMP
Impact Extents



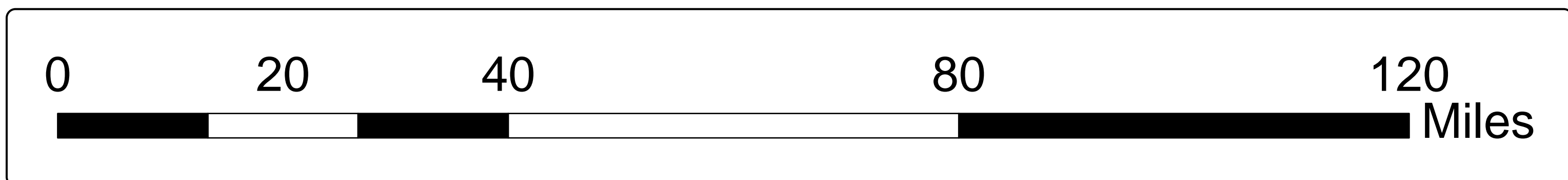
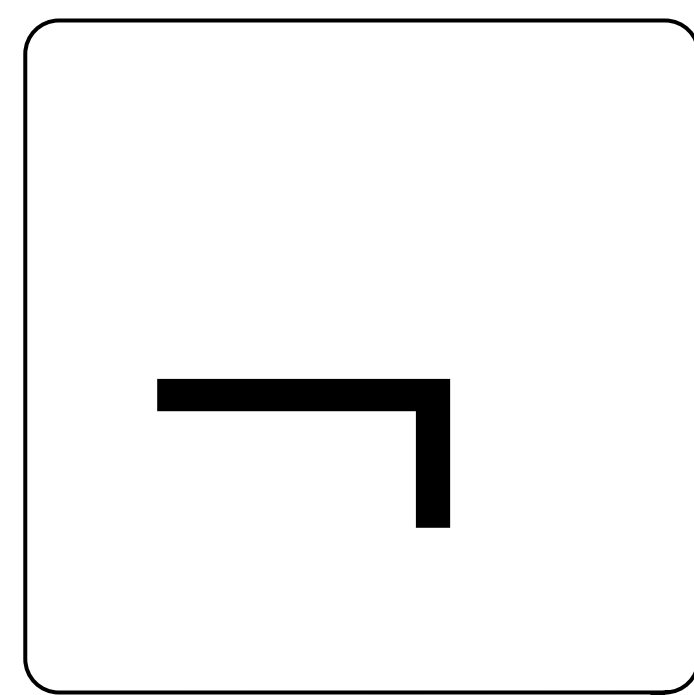
Key to Features

Recommended FMS*

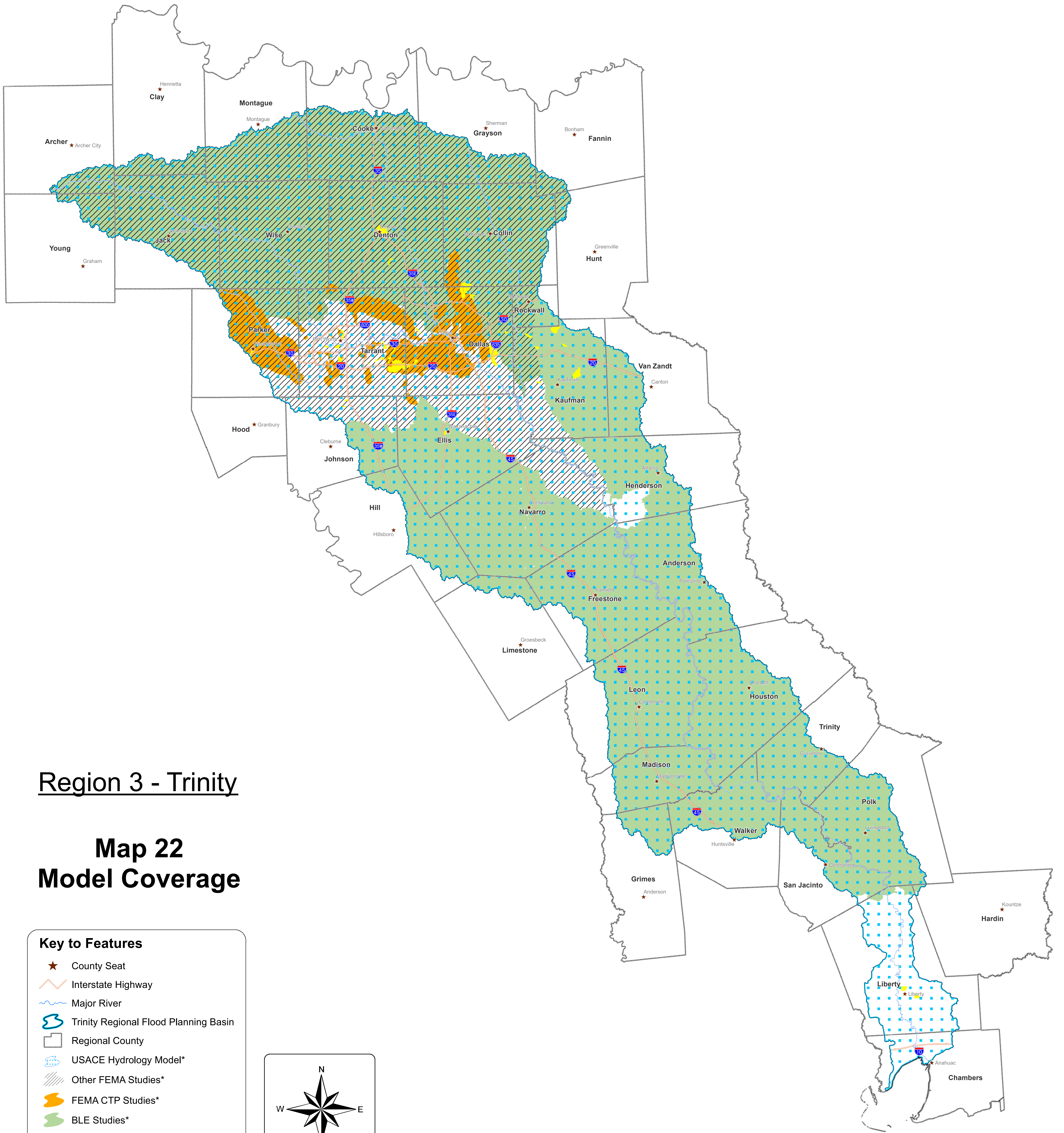
- High
- Low

- County Seat
- Major Reservoir
- HUC 12
- Major River
- Interstate Highway
- Regional County
- Trinity Regional Flood Planning Basin

* Color symbology reflects the number of FMSs that overlap for the same area. The darker the color, the greater the number of FMSs.



Region 3 - Trinity
Map 21
Recommended FMSs
Impact Extents



Region 3 - Trinity

Map 22 Model Coverage

Key to Features

- ★ County Seat
- Interstate Highway
- Major River
- Trinity Regional Flood Planning Basin
- Regional County
- USACE Hydrology Model*
- Other FEMA Studies*
- FEMA CTP Studies*
- BLE Studies*
- FMP Model Areas

*Model supporting FMEs, FMSs, and Floodplain Mapping.

